

DIMENSIONS (see page 2)

- Width: 1000 to 2000 mm
- Length: 700 to 1100 mm
- Thickness: 25 mm

TEXTURES

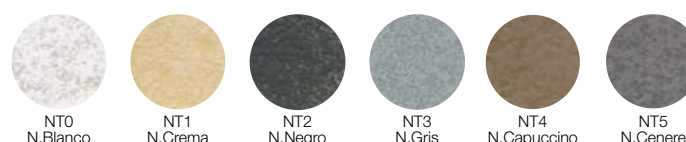


COLOURS*

SOLID COLOURS: LISO, PIZARRA AND BRICKS (photo of Pizarra texture)



NATURE COLOURS: PIZARRA AND BRICKS (photo of Pizarra texture)



Colour and texture books available.

GRATE



Stainless steel grate



Lacquered grate

The lacquered grate can be ordered in:
0P, 0T, 18T, 22T, 31T,
33T, 36T, 37T, 40T.

Approximate dimensions. Tolerance 5mm.
This tolerance may be modified without prior notice.
Please contact Fiora if you have any queries.

Last revision 12/12/2017

MATERIAL

Tray: Silexpol® (combination of polyurethane resin, silica, and other minerals).

Grate: stainless steel finish.

PRODUCT CHARACTERISTICS

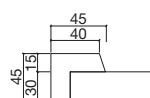
- Non-slip finish: class III (analysis method: UNE-ENV 12633: 2003).
- Nanobath: bacteriostatic and fungistatic.
- The tray can be cut to fit the place where it is to be installed.
- Metaface: an additional coat which increases the durability and resistance of the shower tray finish.
- Installation on the floor, raised, or flush with the floor.
- Completely flat underneath.
- 100% waterproof, does not require sealing.
- Easy to install using silicone, polyurethane putty or MS polymer.
- Ultraviolet (UV) protection.
- Easy to repair.

INCLUDED

- Shower tray.
- D52 standard shower waste**.
- Stainless steel grate.
- Hook.
- Assembly instructions and Owner's manual.
- Cardboard box.

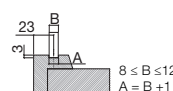
OPTIONS

- Shower wastes**:
 - D52 vertical waste.
- Lacquered stainless steel grates.
- Frame:



Any edge may be framed unless it is curved.

- Channel for screen (on customised frame):



- Adaptors**:
 - 45° Union Elbow (Ø 50 / Ø 40).
 - Inches Adaptor (Ø 40 / Ø 1 1/2").
- Coloured silicone (MASI)**:
 - Available in 0P, 0T, 18T, 22T, 31T, 33T, 36T, 37T, 40T.
- Quick-drying polyurethane putty (MARAPI)**.
- Spare parts available.
- Accessible system (max. 2030 mm).

ASSEMBLY ALTERNATIVES

- Sep-system**.
- Skirting to raise shower trays**.

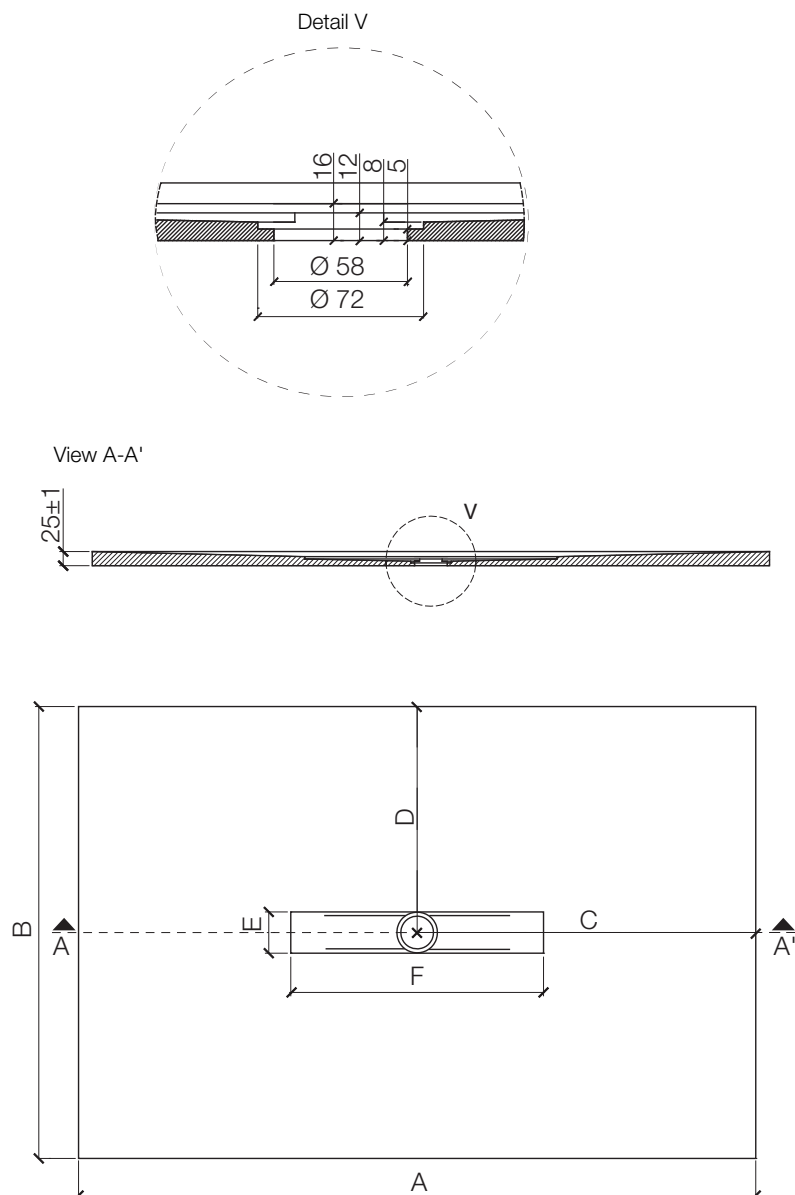
PACKAGING

- Individually packaged in high-resistance box.
- Cardboard box with a plywood perimetral frame, adapted to the dimensions of each tray, with a screw-on lid to make it easier to open once it reaches its destination.

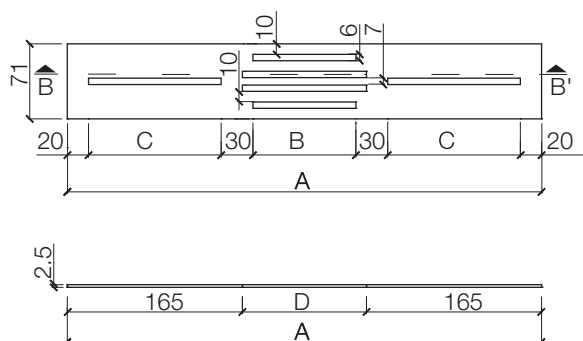
*Other colours available upon request.
**Data sheet available

DRAWINGS

TRAY



GRATE



AVAILABLE MOULDS (dimensions in mm)					
A	B	C	D	E	F
1000	700	500	350	73	448
	750		375		
	800		400		
	900		450		
	1000		500		
1200	700	600	350		448
	750		375		
	800		400		
	900		450		
	1000		500		
1400	700	700	350		598
	750		375		
	800		400		
	900		450		
	1000		500		
1600	700	800	350		
	750		375		
	800		400		
	900		450		
	1000		500		
1800	700	900	350		798
	750		375		
	800		400		
	900		450		
	1000		500		
2000	700	1000	350		
	750		375		
	800		400		
	900		450		
	1000		500		
2200	700	1100	350		
	750		375		
	800		400		
	900		450		
	1000		500		

Dimensions in mm			
	GRATE 450	GRATE 600	GRATE 800
A	447	597	797
B	97	115	165
C	125	191	266
D	117	135	185

CONDITIONS OF USE AND MAINTENANCE

Follow these simple recommendations and you can enjoy your SILEX® shower tray by FIORA® for many years to come.

For routine cleaning (after showering) simply rinse the tray with water and ensure that there is sufficient ventilation in the bathroom. For thorough cleaning, rinse the tray with water and any commercial product available for bathroom cleaning on the market and clean using a cloth or a non-abrasive sponge. It is advisable to avoid the use of cleaning or disinfecting products which contain alcohol. Abrasive products (e.g. scourers) are not suitable either as they may damage the shower tray surface.

In terms of maintenance, a descalant product in the form of a spray for cleaning shower screens can be used; these products should be applied to the tray and then rinsed. The use of these products is especially advisable in areas or communities with very hard water (with a lot of lime).

For persistent stains, see the section titled "CLEANING OR REMOVING PERSISTENT STAINS FROM SILEXPOL® COMPONENTS".

NANOBATH

FIORA BATH COLLECTIONS, S.L.U. has developed NANOBATH technology (based on nanotechnology) used in their bathroom products to provide them with fungistatic, bacteriostatic (ISO 22196:2007) and hydrophobic properties.

This technology consists of the application of a topcoat over our compound which reacts with the element thus transforming its exterior properties.

NANOBATH enhances FIORA BATH COLLECTIONS, S.L.U. products with added value for an unlimited time, which results in many advantages for the end user:

- Safer and more hygienic.
- Saves water, reduces cleaning and disinfecting products use.
- Reduces the risk of fungal growth and contagion (ideal for public areas).
- Given that these materials are inert, it is not a harmful product for the user which means that no preventive measure has to be taken.

METALFACE

This is a new product which has been developed by FIORA BATH COLLECTIONS S.L.U. that, when applied in combination with our varnishes, significantly improves the scratch resistance of all our products and extends their useful life. It also improves their resistance to harsh chemicals (which could affect the material and change the tone of the finishes, or irreversibly damage the layer of colour which gives the product its final finish).

PRODUCT SPECIFICATIONS

DECLARATION OF PERFORMANCE

Nº S101

1 - Product:

SILEX SHOWER TRAYS

MODELS: EXTRAFLAT, MIXED, FRAMED, AVANT, PRIVILEGE, ESSENTIAL AND TRACE

2 - Name and address:

Fiora Bath Collections, S.L.U.

Ctra. de Logroño, km 23.600 - 26300 Nájera (La Rioja) - SPAIN.

3 - Use:

Domestic use for personal hygiene

4 - System of assessment:

System 4

5 - Notified Body:

Ensatec S.L. Nº1668

6 - Declared performance:

Essential Characteristics	Performance	Harmonised technical specification	Report and date
Cleanability	Class 1	UNE EN 14527:2006 + A1:2010	
Durability	Class 1	UNE EN 14527:2006 + A1:2010	
Chemical agents resistant	Correct	UNE EN 14527:2006	231394.01 4-10-2013
Resistance against sudden temperature changes	Correct	UNE EN 14527:2006	231393.01 4-10-2013
Water absorption	Correct	UNE 127020:1999 EX	118514.02 7-10-2013
Frost resistance	Frost resistant	UNE 67028:1997 EX	118514.02 7-10-2013
Shock resistance	Does not occur	UNE EN 14158:2004	118514.02 7-10-2013
Adherence to the base support	Correct	UNE EN 1015-12:2000	118514.02 7-10-2013
Surface hardness to scratching	>7	UNE 67101/1M:1992	173410.02 4-10-2013
Sliding resistance (Smooth Texture)	Class 3 (Class 2)	UNE EN V 12633:2003	237394 26-06-2014
Resistance to surface abrasion	Class 4	UNE-EN-ISO 10545-7	52867 18-10-2013

- The performance of the product identified in point 1 is in conformity with the declared performance in point 6.
- This declaration of performance is issued under the sole responsibility of the manufacturer identified in point 2.

Nájera, July 1st 2013

David Pascual (Plant Manager)

OTHER PROPERTIES

- Linear expansion coefficient (heat):
0.000008 mm/°C UNE-EN ISO 10545-8:1994 (DIN UNE-EN ISO 10545-8)
- Linear expansion coefficient (cold):
0.000002 mm/°C UNE-EN ISO 10545-8:1994 (DIN UNE-EN ISO 10545-8)

Resistance to chemical products

PRODUCT TESTED	EXPOSURE TIME	SILEXPOL® DETERIORATION
Wine vinegar	8h	A
Bleach	1h	A
Window cleaning agent	8h	A
Iodine	1min	B
General cleaner (<5% anionic surfactants)	8h	A
Degreasing agent (<5% anionic surfactant agents and polycarboxylates and 5%-15% non-ionic surfactant agents)	8h	A
Limescale remover	8h	A
Hair dye (medium colour)	1min	B
Hair dye (dark colour)	1min	D
Vegetable oil for human consumption	8h	A
Makeup remover liquid	8h	A
Acetone	1min	A
Alcohol 96°	8h	A
Hydrogen peroxide	8h	A
Merbromin	1min	B
Organic solvent	1min	A
Fruit juice	8h	A
Coffee	8h	A
Red wine	8h	A
Lipstick	8h	A
Ammonia	8h	A
Ink	8h	A
Permanent marker	8h	A
Biro	8h	A
Pencil	8h	A
Hydrochloric acid solution	1h	B

The classification used corresponds to the following codes:

- A: Without important visible changes.
- B: Slight change of colour.
- C: Moderate change in colour.
- D: Significant change in colour.
- E: Layer etched.